

AHRQ Safety Program for Long-term Care: HAIs/CAUTI

Engaging Residents and Families in HAIs/CAUTI Prevention

National Content Webinar Series for Core Team

January 21, 2016

Presenters



Kathy Bradley, Family Member
CEO and Executive Director
Our Mother's Voice



Yvette Green, Resident
Member, Consumer Voice Governing Board



Robyn Grant, MSW
Director of Public Policy and Advocacy
National Consumer Voice for Quality Long-Term Care



Sue Collier, RN, MSN, FABC
Clinical Content Development Lead
Health Research & Education Trust
American Hospital Association

Overall Learning Objectives

- All team members will understand the importance of their role in recognizing and reporting information that will help YOUR FACILITY improve resident safety.
- All team members will understand how HAI/CAUTI elimination efforts connect to overall safety and quality of care for residents and staff.
- All staff will recognize their value as a member of the HAI/CAUTI safety team.

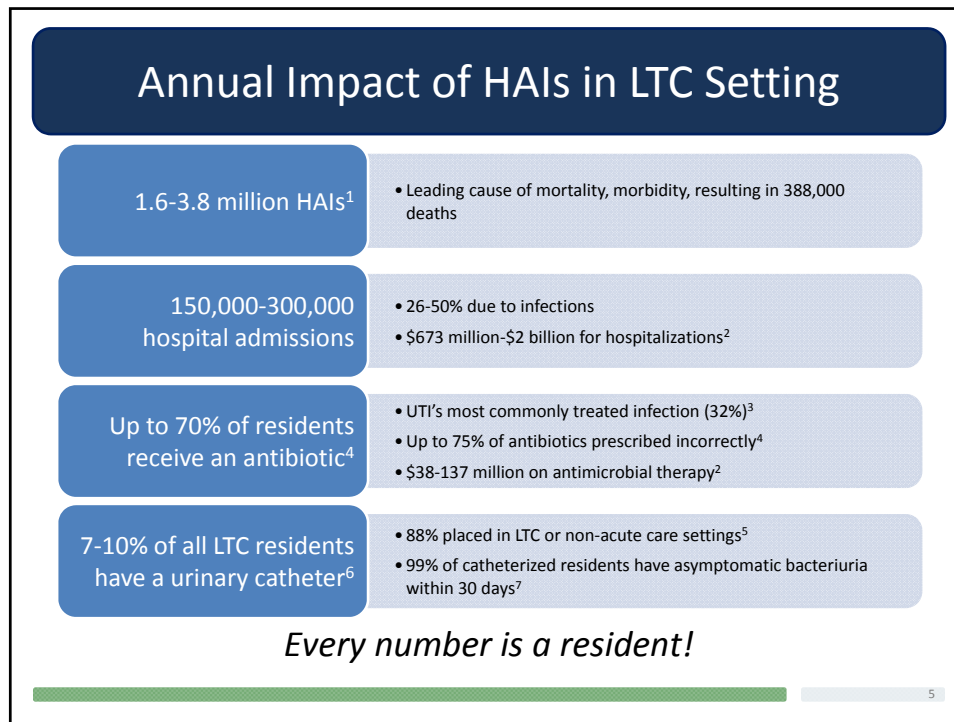
3

Learning Objectives

Upon completion of this session, participants will be able to:

- Define resident-centered care;
- Review the benefits of engaging residents and families as partners in care;
- Describe examples of how to engage residents and families in reducing HAIs/CAUTIs; and
- Identify tools and resources you can use to educate staff, residents and families.

4



Resident's Perspective

Yvette Green
Resident Member
Consumer Voice Governing Board



6

What is Person-Centered Care?

Person-Centered Care:

- Keeps YOU, the person, at the center of every decision-making process
- Gives YOU control and choices
- Honors YOUR preferences

The focus is on YOU!

7

What is Resident and Family Engagement?

Involve residents/families in all aspects of care and life in the facility.

- Informing and educating residents/families
- Asking and encouraging residents/families to share observations, concerns, questions, their experiences and their perspectives
- Getting their input, feedback and ideas
- Involving them in all levels of decision-making
- Making them part of the team—collaborating
- Partnering with them



8

Benefits to Staff of Engaging Residents/Families

- Better health outcomes!
- Increases resident, family, and staff satisfaction
- Identifies issues/concerns staff may not know about so they can be addressed
- Generates ideas for solving problems

9

Benefits To Engaging Residents



**What are some benefits to engaging residents
and families in infection prevention?**

10

Achieving a Culture of Safety with C.A.U.T.I. and T.E.A.M.S.

REMEMBER C.A.U.T.I. TO PREVENT CAUTI

C **A** **U** **T** **I**

Catheter Removal
Think about whether to insert a catheter. If you do, use the lowest number of catheters possible. Remove the catheter as soon as possible. Use the lowest number of catheters possible. Use the lowest number of catheters possible.

Aseptic Insertion
Only trained personnel should insert catheters. Use hand hygiene and wear sterile gloves. Use the aseptic technique. Use the aseptic technique. Use the aseptic technique.

Use Regular Assessments
Insert one urinary catheter only when there is a good reason. Consider alternatives to using urinary catheters. Use a bladder scanner to guide management. Reassess catheter use at least every 24 hours.

Training for Catheter Care
Train staff, including all nursing staff. Monitor a closed drainage system, and ensure the catheter is secure. Use aseptic technique. Use aseptic technique. Use aseptic technique.

Incontinence Care Planning
Consider whether a urinary catheter is necessary. Consider whether a urinary catheter is necessary. Consider whether a urinary catheter is necessary.

Remember: No catheter means no CAUTI!

Appropriate Indications for a Urinary Catheter
To assist healing of stage III or stage IV pressure ulcers and sacral wounds in incontinent residents. Check and score sensory response to observation. Report or palliative care associated with incontinence care.

The AHRQ Safety Program for Long-Term Care: CAUTI
Funded by the Agency for Healthcare Research and Quality

T.E.A.M.S.

T Team Formation

E Excellent Communication

A Assess What's Working

M Meet Monthly

S Sustain Efforts

The AHRQ Safety Program for Long-Term Care: HAIs/CAUTI
Funded by the Agency for Healthcare Research and Quality

11

Using T.E.A.M.S. To Engage Residents/Families

T.E.A.M.S.

T Team Formation

E Excellent Communication

A Assess What's Working

M Meet Monthly

S Sustain Efforts

The AHRQ Safety Program for Long-Term Care: HAIs/CAUTI
Funded by the Agency for Healthcare Research and Quality

T <u>Team Formation</u>	<ul style="list-style-type: none"> • Include residents/families • Invite residents/families to all meetings; facilitate participation
E <u>Excellent Communication</u>	<ul style="list-style-type: none"> • Encourage residents/families to speak up • Educate, inform residents/families concerning HAI/CAUTI prevention efforts
A <u>Assess What's Working</u>	<ul style="list-style-type: none"> • Share performance, successes, barriers
M <u>Meet Monthly</u>	<ul style="list-style-type: none"> • Ask for feedback (stories, observations) • Provide updates concerning HAI/CAUTI prevention efforts at resident/family council meetings • Ask for ideas to overcome barriers, solve problems
S <u>Sustain Efforts</u>	<ul style="list-style-type: none"> • Include stories • Include residents in new staff orientation and education • Provide CAUTI prevention information at care plans

12

Using C.A.U.T.I. To Engage Residents/Families



- C**atheter Removal
 - Tell residents/families you will work together to try to remove the catheter if possible
 - Educate about catheters and UTIs
- A**septic Insertion
 - Explain how catheters are inserted properly to avoid infection
- U**sing Regular Assessments
 - Explain the process to assess whether a resident needs a catheter
 - Discuss alternatives to an indwelling catheter
- T**raining for Catheter Care
 - Train residents/families in catheter care hygiene
 - Explain the signs and symptoms of UTI
 - Involve residents/families in noting and reporting any signs/symptoms to staff
- I**ncontinence Care Planning
 - Ask residents and/or family members their preferences, needs and concerns
 - Explore alternatives to catheters
 - Encourage active participation in all aspects of planning

13

Preventing HAIs/CAUTI



What are you doing now to engage residents and families in preventing CAUTI or any infections?

14

Challenges To Engaging Residents



What challenges have you had when engaging residents and families in HAIs/CAUTI prevention?

15

Summary of Key Elements of Resident/Family Engagement

- Involve residents and families as part of team!
- Provide information and education
- Seek resident and family perspective, ideas, suggestions for solving problems; act on them whenever possible
- Actively create and provide meaningful opportunities for residents and families to be engaged

16

LTC Safety Toolkit: Module 5 Resident and Family Engagement

Methods and tools to increase safety, improve satisfaction and optimize resident outcomes

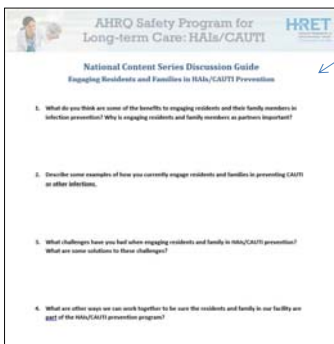
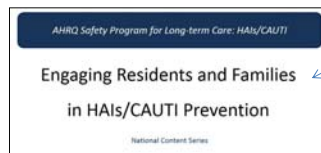


Ways to use the toolkit include:

- ✓ Share videos with teams to spark engagement in staff safety assessments
- ✓ Provide templates and discussion guides to project leads
- ✓ Educate teams on T.E.A.M.S. and Just Culture
- ✓ Use videos and training modules to orient new staff
- ✓ Train teams in using teamwork and communication tools
- ✓ Engage senior leaders and project champions

17

Educating All Staff in Resident And Family Engagement in a Culture of Safety



- Use slide set with facilitator's notes
- Share recorded session for all staff
- Use Discussion Guide with key questions to spark conversations
- Provide copies of T.E.A.M.S. and C.A.U.T.I Infographics
- Provide Evaluation Form and Certificate of Completion

18

Your Role in Supporting Resident & Family Engagement in HAI/CAUTI Prevention (T.E.A.M.S.)

- Participate in the training on HAI/CAUTI Prevention
- Share information with all staff/teammates
- Help educate residents and family members about HAI/CAUTI prevention
- Include physicians and non-physician providers in the education
- Remember to include volunteers and community members



19


Your Role in Supporting Resident & Family Engagement in HAI/CAUTI Prevention (C.A.U.T.I.)

- Monitor and report small changes in a resident's condition
- Ensure proper catheter insertion and maintenance
- Train residents/family in catheter care hygiene
- Explain the signs and symptoms of UTI
- Discuss alternatives to an indwelling catheter
- Include family in catheter assessments



20

ACTION: Engage Residents




What will you do to engage residents and families in the HAIs/CAUTI prevention program?

21

Resident & Family Engagement Brochure

RESIDENT AND FAMILY ENGAGEMENT:
What is my role as a leader?



What is resident and family engagement?

- Resident and family engagement is one component of person-centered care, a philosophy that recognizes residents as individuals and as partners.
- Effective resident and family partnerships are demonstrated by including the residents and family as active members of the health care team.
- Accommodating residents' choices and preferences in their plan of care is one way facilities can reflect a commitment to resident and family centered care.
- Resident advisers, advocates, and long-term care ombudsmen are examples of formal roles in long-term care facilities that promote shared decision making and active partnerships.

How can resident and family engagement improve the culture of safety and prevent healthcare-associated infections?

Healthcare associated infections (HAIs) occur far too often in nursing homes. There are many contributing factors to the high incidence of HAIs in nursing homes, and most HAIs are preventable. HAIs can have numerous negative effects on the resident's quality of life and outcomes. HAIs have also been linked to increased rates for acute hospitalizations, with associated morbidities and mortality.

Reducing HAIs requires a team effort and should include the resident and family as part of the safety improvement team. Involving residents and family members in team prevention efforts—

- Promotes a comprehensive approach to reducing all infections in nursing homes
- Improves resident engagement
- Improves staff experience


What is my role as a leader?

Encourage resident and family input in day-to-day care.

- Establish a relationship with residents and their family members so you can understand their needs and preferences.
- Encourage residents and families to participate actively in care plans.
- Share concerns and needs of residents and families with the care team.
- Ask residents and family members to provide feedback on their experiences.

Formally engage residents and families.

- Invite residents to participate in decisions involving new programs and services, staff and resident education and orientation, and policy development.
- Provide opportunities for resident advisers or advocates to serve on quality and patient safety teams.



Where can I find more information?

1. www.aahrq.org/longtermcare
2. www.aahrq.org/longtermcare
3. www.aahrq.org/longtermcare
4. www.aahrq.org/longtermcare
5. www.aahrq.org/longtermcare
6. www.aahrq.org/longtermcare

What is my role as a leader?


Ask leaders, staff, and clinicians to support resident and family engagement.

- Conduct leader, staff, and physician education programs on resident and family engagement.
- Coach leaders, staff, and physicians to develop effective communications and partnerships with residents and families.
- Include goals related to resident and family engagement in short- and long-term plans for the facility.
- Establish policies that promote active resident and family engagement in all aspects of the long-term care facility operations.

Develop resident councils.

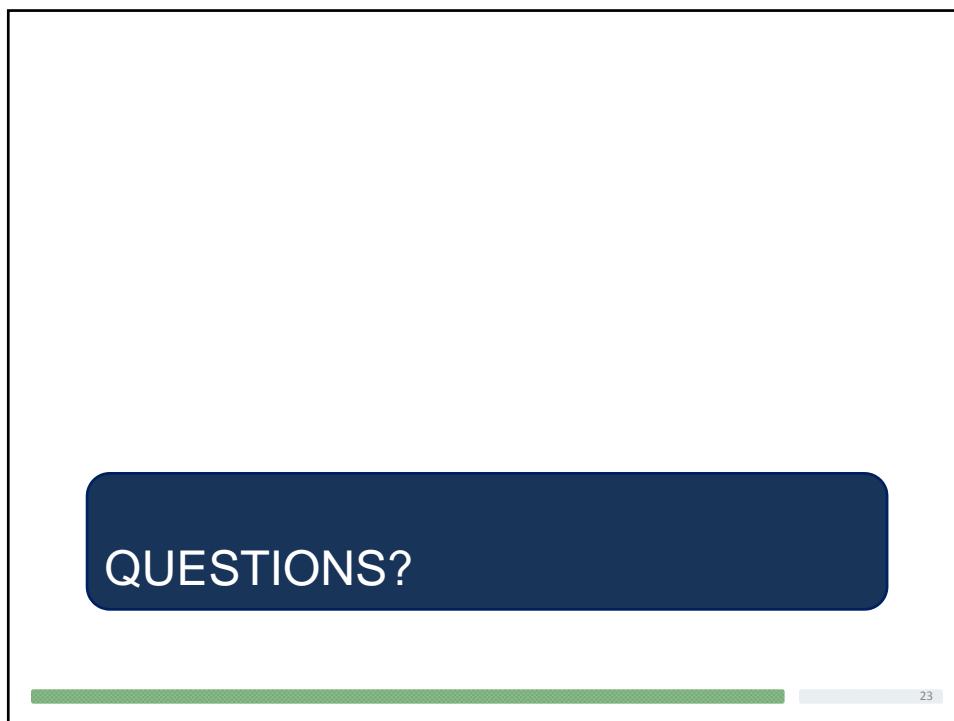
- Recruit, orient, and support residents and family members to serve on councils.
- Ask resident councils for input on all aspects of the facility's operations.
- Provide education to help residents and family members build skills, knowledge, and confidence to be effective team members.

AHRQ Safety Program for Long-Term Care: HAIs/CAUTI



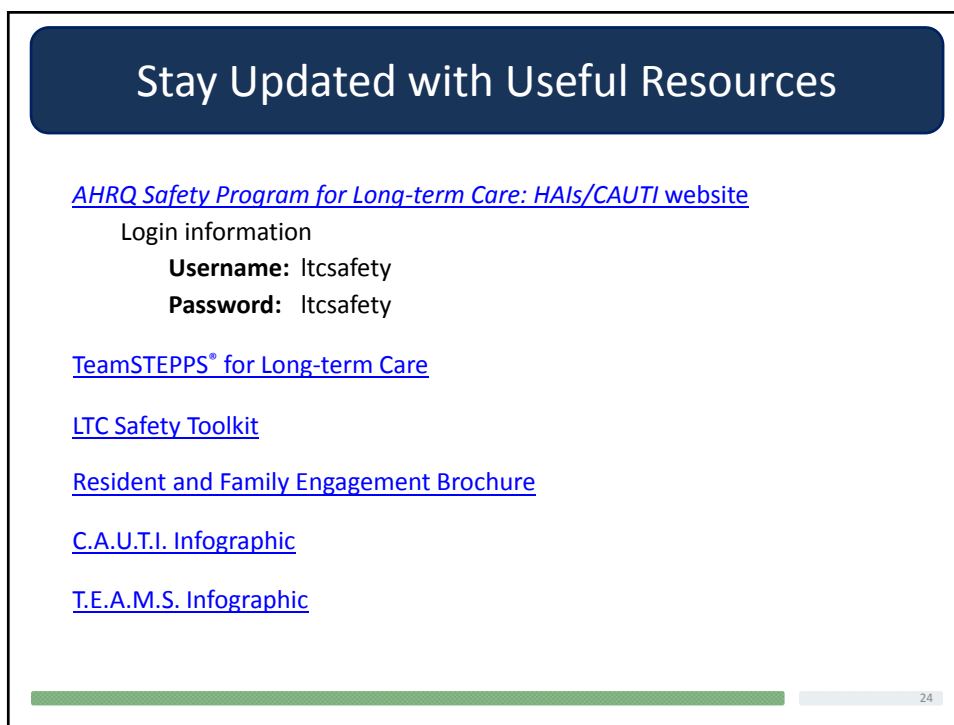
AHRQ Fact No. 18-0003-01
September 2016

22



QUESTIONS?

23



Stay Updated with Useful Resources

[AHRQ Safety Program for Long-term Care: HAIs/CAUTI website](#)

Login information

Username: Itcsafety

Password: Itcsafety

[TeamSTEPPS® for Long-term Care](#)

[LTC Safety Toolkit](#)

[Resident and Family Engagement Brochure](#)

[C.A.U.T.I. Infographic](#)

[T.E.A.M.S. Infographic](#)

24

References

Resident & Family Engagement in HAIs/CAUTI Prevention

- Agency for Healthcare Research and Quality. 2012. *TeamSTEPS® Long-Term Care Version*. Retrieved from <http://www.ahrq.gov/professionals/education/curriculum-tools/teamsteps/longtermcare/index.htm>.
- Advancing Excellence in America's Nursing Homes: Person-Centered Care. Retrieved from http://www.nhqualitycampaign.org/star_index.aspx?controls=personcenteredcareexploregoa.
- AHRQ CUSP Toolkit, Patient Family Engagement. Retrieved from <http://www.ahrq.gov/professionals/education/curriculum-tools/cusp toolkit/modules/patfamilyengagement/index.html>.
- Association for Professional in Infection Control and Epidemiology. Patient safety resources for consumers. Retrieved from <http://www.apic.org/For-Consumers/Patient-safety-resources>.
- CDC. (2014). Antibiotic Use in Nursing Homes. Accessed on 06/23/15 at <http://www.cdc.gov/getsmart/week/downloads/gsw-factsheet-nursinghomes.pdf>.
- CDC. (2015). Infographic: Antibiotic Stewardship in Nursing Homes. Accessed on 09/23/15 at <http://www.cdc.gov/longtermcare/pdfs/infographic-antibiotic-stewardship-nursing-homes.pdf>.
- Frampton, et al. Long-Term Care Improvement Guide. Retrieved from <http://planetree.org/wp-content/uploads/2011/12/LTC-Improvement-Guide-For-Download.pdf>.
- Institute for Patient and Family Centered Care. Retrieved from <http://www.ipfcc.org/advance/topics.html>.
- Centers for Disease Control and Prevention. FAQs about Catheter-Associated Urinary Tract Infection. Retrieved from http://www.cdc.gov/HAI/ca_uti/uti.html.
- Mody L, Bradley SF, Galecki A, et al. Conceptual model for reducing infections and antimicrobial resistance in skilled nursing facilities: focus on residents with indwelling devices. *Clin Infect Dis*. 2011;52:654-61. PMID: 21292670.
- Richards CL. Infections in residents of long-term care facilities: an agenda for research. Report of an expert panel. *J Am Geriatr Soc* 2002;50:570-6.
- Smith PW, Bennett G, Bradley SF, et al. SHEA/APIC Guideline: Infection prevention and control in the long-term care facility. *Infect Control Hosp Epidemiol* 2008; 29:785-814. PMID: 18786461.
- Trautner, B. (2014). Demystifying CAUTI: When to Culture and When to Treat. *AHRQ Safety Program for Long-term Care: HAIs/CAUTI*. <http://www.ltsafety.org/webinars/resources/September%202014%20Content%20Webinar.shtml>
- Wagner, LM., Roup, B.J., Castle, NG. Impact of infection preventionists on Centers for Medicare and Medicaid quality measures in Maryland nursing homes. *Am J Infect Control* 2014; Jan 42(1): 2-6.