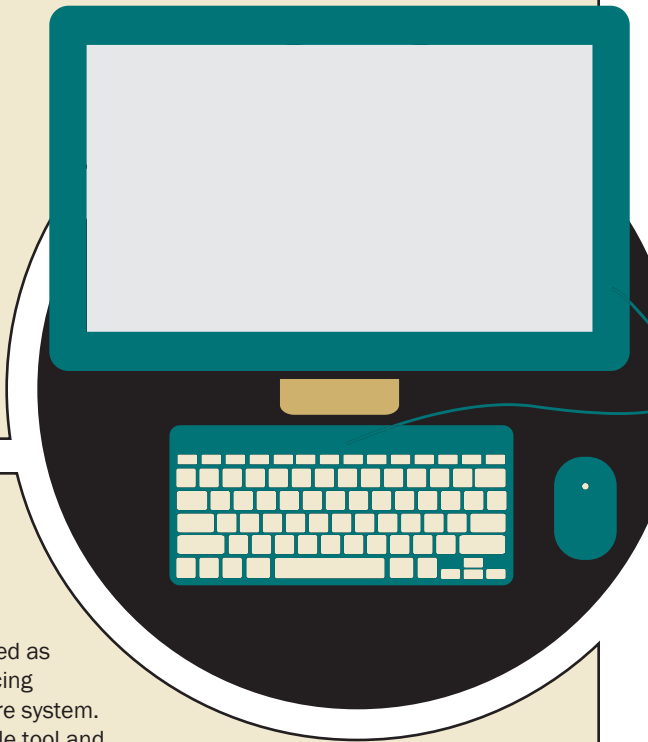


**JUST LAUNCHED**

In partnership with the Gordon and Betty Moore Foundation

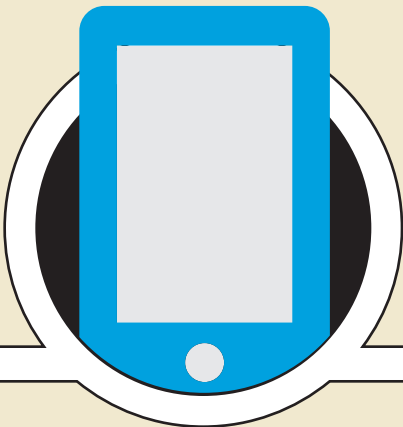
# Huddle for Care

An exciting new resource for improving care transitions.



## What is Huddle for Care?

An interactive website and mobile application for story sharing among care transition innovators and implementers. The site is a collaborative to discuss challenges and develop solutions for transitional care programs that are tailored to specific program and patient needs.



## Why develop a website focusing on care transitions?

Effective transitioning of care has emerged as one of the most important challenges facing patients and the United States health care system. Huddle for Care is a vital, easily accessible tool and resource for those on the ground implementing effective care transitions every day.

Some additional site features include:



Peer-to-peer learning and community building



Social media sharing



Post your events



Take part in discussions



Bookmark stories for team meetings



Suggest stories

## Who should use Huddle for Care?

All individuals working to improve care transitions and care coordination across the care continuum (discharge planners, case managers, social workers, nurses, physicians, pharmacists, etc.)

## Where can I access Huddle for Care?

Accessible anywhere from the internet and your mobile device.

## How do I join Huddle for Care?

Visit [www.huddleforcare.org](http://www.huddleforcare.org) and create your profile to join the community. For more information, contact HRET at [huddleforcare@aha.org](mailto:huddleforcare@aha.org).



GORDON AND BETTY  
**MOORE**  
FOUNDATION

**HRET**  
HEALTH RESEARCH &  
EDUCATIONAL TRUST  
In Partnership with AHA